

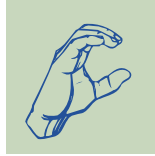
N



E



C



NEW ENGLAND CENTER DEAFBLIND PROJECT

*A Federal Technical Assistance Project for
Children, Youth and Families in
Connecticut, Maine, Massachusetts
& New Hampshire*

New England Center Deafblind Project
175 North Beacon Street • Watertown, MA 02472
Tel: 617-972-7515 • www.necdbp.org

The New England Center Deafblind Project is funded by the United States Department of Education, Special Education Programs, under the Individuals with Disabilities Act (IDEA), to assist State Education Agencies in developing their capacity to adequately serve children and youth who are deafblind.

Available Technical Assistance/Consultation

- On-site, regional and multi-state training relative to “effective practices” in deafblind education
- Child-specific consultation to team members working with children who are deafblind
- Consultation specific to family issues, particularly in the area of advocacy training and self-determination
- Community resource & evaluation referral
- Information dissemination

Eligibility

The New England Center Deafblind Project defines deafblindness as follows:

“Children and youth having auditory and visual impairments, the combination of which creates such severe communication and other developmental and learning needs that they cannot be appropriately educated in special education programs solely for children and youth with hearing impairments, visual impairments or severe disabilities, without supplementary assistance to address their educational needs due to these dual, concurrent disabilities.”

Who is Eligible for Technical Assistance?

Individuals from birth to age 22 who have any combination of the disabilities described below are eligible for technical assistance under the Individuals with Disabilities Act (IDEA). The following descriptions and classification codes apply to the chart:

- A. Individuals who may have multiple disabilities due to generalized nervous system dysfunction, with documented hearing loss and vision loss. The child's etiology may be progressive in nature.
- B. Individuals who have sensory loss of both vision and hearing (low vision; mild to moderate hearing loss).
- C. Individuals who have a sensory loss of both vision and hearing, one of which is severe and the other less severe (20/200 acuity or greater; 71-90 dB or greater).
- D. Individuals who have sensory loss of both vision and hearing (low vision to total blindness; moderate to profound hearing loss).
- E. Individuals who have significant sensory loss of both vision and hearing (legal blindness; severe or profound deafness).

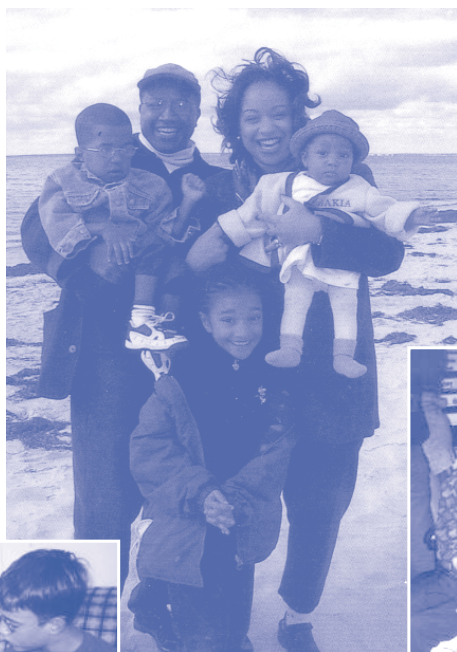
** Cortical Vision Impairment (CVI): Individuals who have a documented visual impairment caused by the disturbance of the posterior visual pathways and/or the occipital lobes of the brain. The degree of visual impairment can range from minor visual impairment to total blindness.*

Eligibility Chart and Classification Codes

		Degree of Vision Loss						Cortical Vision Impairment (CVI)	
		Normal 20/10 - 20/40	Near Normal 20/40 - 20/70	Low Vision 20/70 - 20/200	Legally Blind 20/200+	Legally Blind with Light Perception	Totally Blind or no Light Perception		
Degree of Hearing Loss	Normal 0-25 dB								
	Mild 26-40 dB		A			C		✱	
	Moderate 41-55 dB		A	B		D		✱	
	Moderate Severe 56-70 dB					D		✱	
	Severe 71-90 dB		C	D			E		✱
	Profound 91 dB or greater						E		✱

MISSION STATEMENT

To build and strengthen a collaborative system that enables infants, children and youth who are deafblind to participate meaningfully in their homes, schools and communities in Connecticut, Maine, Massachusetts & New Hampshire.





This report was supported in whole or in part by the U.S. Department of Education, Office of Special Education Programs in cooperation with Perkins School for the Blind. However, the opinions expressed herein do not necessarily reflect the policy or position of the U.S. Department of Education, Office of Special Education Programs, and no official endorsement by the Department should be inferred.